



[www.lighthorneheathprimaryschool.co.uk](http://www.lighthorneheathprimaryschool.co.uk)

### **End of year reports**

The end of year reports will be sent out to you by email this year. Please can you ensure that your email address is correct so that we send the report out to the right person. Early years and Key Stage 1 reports will be sent out on Thursday 4th July and Key Stage 2 reports will be sent out on Friday 5th July. Unfortunately we will not be able to give out paper copies this year.

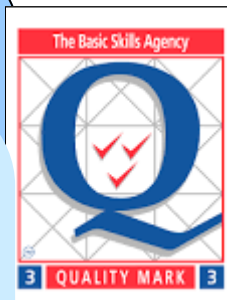
### **Quidditch Day!**

On Monday 3rd June (the first day back after half term) we are having a special Quidditch day based on the game in Harry Potter. The children need to come to school in their PE kits for the day and will take part in activities. Reception children will still go swimming in the afternoon and will complete their activities in the morning.



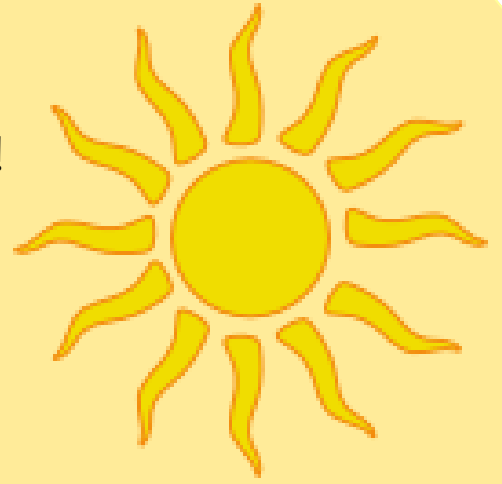
### **Reminder**

Please try to make appointments with Miss Clifton for the afternoon when she has her leadership time. You can see Mrs Hendriksen to arrange an appointment.



## **The sun has (finally) got it's hat on!**

Let's hope the nice weather continues! Please ensure that your child is protected from the sun by sending them into school wearing sun tan lotion and a sun hat. If children need to bring sun tan lotion in with them please ensure it is in a labelled bottle and that children can apply it themselves.



The Malt Shovel at Gaydon offer excellent food, afternoon tea and refreshments and have very kindly chosen Lighthorne Heath Primary School as their charity of the month in June 2019. All donations received in the month of June will be paid to our school fund account which will enable us to purchase some additional resources for our pupils.

If you and your family and friends visit the Malt Shovel, please tell them about this fantastic incentive to help our school.

## **ECO Schools**

We have set up an eco committee this week and are planning on working towards getting our ECO Schools award. To do this we need to look at how we can make our school more eco friendly and will be sharing advice on how you can look after the environment at home too! Watch this space!





**Year 1,2,3 had ana amazing time at the Space Centre on Monday! Here are some of the photos.**

## Diary Dates

**W/C 27th May—Summer Half Term**

**Monday 3rd June– Quidditch day!**

**Thursday 6th June– Whole Class Photos**

**Thursday 6th June– Y 456 Anglo Saxon visitor at school**

**W/C 10th June– Phonics screening check**

**Friday 14th June– Father's Day Lunch**

**Thursday 4th July— EYs and KS1 reports go out**

**Friday 5th July—KS2 reports go out**

**Friday 5th July– Sports Day and family picnic lunch**

**Friday 12th July– Summer Fayre from 1:30pm**

**Friday 19th July– Y6 leavers assembly 10:30am**

**Friday 19th July—Break up for the summer holidays**

Congratulations to our Ready Steady Read raffle winners who received a free book of their choos-



## House Points for this week

<b>Rabbits</b>	<b>38</b>	<b>Dogs</b>	<b>21</b>
<b>Guinea Pigs</b>	<b>18</b>	<b>Cats</b>	<b>56</b>

## Lighthorne Heath Heroes!

Congratulations to all of this week's  
Lighthorne Heath Heroes!



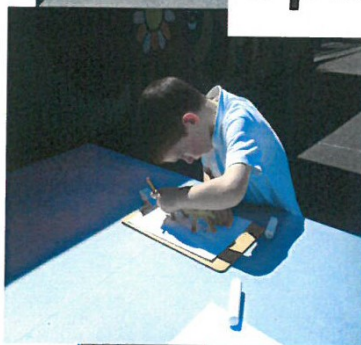
# Year 1,2,3 have been learning about shadows

## Exploring Shadows

21.5.19—L.O: To draw and explore shadows outside. As part of our 'Light and Dark' topic we had some time outside exploring what our shadows looked like. We drew around our partner and then used the small animals to draw their shadows. We learnt some new vocabulary when thinking about objects.



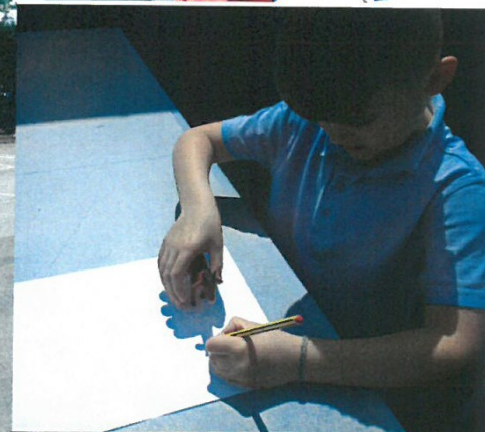
**Opaque**



**Transparent**



**Translucent**



# ATTENDANCE MATTERS

every school day counts.

Well done to Y Reception who had  
the highest attendance at school  
this week with a brilliant %

**Reception– 98.75%**

I have decided to leave Nursery off the attendance as  
their attendance is not statutory.

**Year 1/2/3– 97.75%**

**Year 4/5/6– 98.15%**

**Whole School Attendance: 98.09%**

**The minimum acceptable attendance, as  
stipulated by Warwickshire Local  
Authority, is 95%.**

**Low attendance results in poorer  
educational progress and attainment.**



**UN Convention on the Rights of the Child:  
Article 3 (Best Interests of the Child.)**



SEND  
NATIONAL  
CRISIS  
Warwickshire

# Family friendly Picnic in the Park

**Thursday 30th May**  
**12:30 - 15:30**

**Pump Room Gardens,  
Leamington Spa**

Bring a picnic, a blanket and help campaign  
for better funding and support for children  
with Special Educational Needs and Disabilities

Stalls, face painting, animal encounter,  
bouncy castle, support for families, speakers,  
crafts and a sensory and quiet area

#SEND  
Crisis

Care about SEND?  
Join us and thousands  
protesting across the UK



@SENDCrisisWarks

#OurKids  
Matter

# Bishop's Hill Nature Reserve



## Summer Open Day

Thursday 1st August 2019  
4pm - 7pm

Free,  
drop-in  
event

Guided Walks @ 4pm and 6pm

Fun for all the family including games, crafts and trails.

Learn more about the reserve and how you can get involved.



This is a free, drop-in event! Come and say hello!  
Meeting point: Next to the Yellow Land

[www.warwickshirewildlifetrust.org.uk/events](http://www.warwickshirewildlifetrust.org.uk/events) or [enquiries@wkwt.org.uk](mailto:enquiries@wkwt.org.uk) for more information