

www.lighthorneheathprimaryschool.co.uk

Dear Parents and Carers,

We had a super whole school trip to Cadbury's World in Birmingham yesterday. The children learned about the Aztec rainforests, the Victorian origins of Cadburys and got involved in a hands on way in the processes involved in chocolate production. They especially loved the chocolate tasting, the 4-D theatre experience and the play park.

A great day out, enjoyed by all, and a fabulous inspirational starting point for this term's topic work.



Don't forget it is World Book Day next Thursday. The children are invited to dress up on the chocolate theme of the shared book we are using. Get those Smartie outfits ready..

Jacque Birch
Associate Head Teacher



Eco Aware

The children in Eco Club, together with Mrs Cox, have produced this fantastic artwork on keeping pollution out of our seas. They have put to good use the many bottle tops which we have all been saving over the last ter.

Their results look really striking, although not yet quite finished. A great message to greet visitors to our school. A big well done to everyone involved.



DIARY DATES

Reading Fridays—every Friday @ 08.55-9.10 in your child's Class.

Whole School Running—every Thursday and Friday lunchtimes 12.35-1.00. All welcome.

Monday 2nd March—Sponsored Reading Week

Thursday 5th March—World Book Day.

Friday 13th March—Ownbook.com Video Making

Thursday 19th March—Ownbooks.com Reading Assembly.

Tuesday 31st March—Parents' Evening 1

Thursday 2nd April - Parents' Evening 2

Friday 3rd April– Break up for Easter.

Monday 20th April— School closed INSET

Tuesday 21st April—Return to school.

Tuesday 21st April– School Nurse Visit R and Y6



Article 3 (best interests of the child)

The best interests of the child must be a top priority in all decisions and actions that affect children.

House Points!

We will do 2 weeks house points next Friday and update you then.

Lighthorne Heath Heroes!

Congratulations to all of this week's
Lighthorne Heath Heroes! And our Smiler !
Friday 28th February 2020



Advice on the coronavirus for places of education

How serious is the coronavirus?

- It can cause flu-like symptoms, including fever, cough & difficulty breathing
- The infection is not serious for most people, including children
- There is currently no vaccine
- Most people get better with enough rest, water to drink and medicine for pain

How likely are you to catch the virus?

- You can only catch it if you have been close to a person who has the virus
- The chance of being in contact with the virus is currently low in the UK
- If you have travelled to areas where many people are infected, your chance of catching the virus is higher, in China and any affected areas

How can you stop coronaviruses spreading?

If you need to cough or sneeze



Cover it with a tissue



Bin it



Rinse it
Dry with paper towel or hand dryer



After breaks & sport activities



Before visiting & eating



On arrival at any childcare or educational setting



After using the toilet



Before leaving home



Try not to touch your eyes, nose, and mouth with uncleaned hands



Do not share items that come into contact with your mouth such as cups & bottles



If unwell do not share items such as bedding, clothes, pencils & towels



Stop germs spreading with our e-Flag resources on hand and respiratory hygiene feature plans for KS1, 2 and 3. campaignresources.phe.gov.uk/schools

What should you do if you feel unwell?

Keep away from others and stay at home to stop the infection spreading. Avoid public transport if you think you have symptoms of coronavirus. If you become unwell at a place of education, tell a member of staff and let them know if you have travelled to any other countries in the last 14 days.

If your staff member or parent thinks you have symptoms of coronavirus, they should call **NHS 111** for advice. Follow the UK Government advice for children or educational settings gov.uk/government/publications/guidance-to-educational-settings-about-coronavirus. Parents can visit NHS.uk to find out more information. Teachers and support staff should follow the UK Government advice.

Staff, students and pupils who have returned from Wuhan and Hubei Province in China should self-isolate, and NOT attend education or work for 14 days. See NHS.uk for advice on coronavirus.

If there is an emergency, call 999 immediately



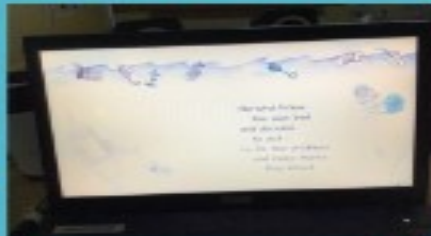
Vantage Class

Vantage Class did some reflective eco- work this week, inspired by the brilliant new artwork in our reception area.

Keep our sea plastic free



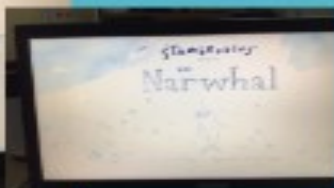
We looked at the eco club's poster



We spotted the issues in the story
Teams help solve problems
Recycle not pollute



We watched the film of the Narwhal



PIC•COLLAGE

Valkyrie Class

As part of their new topic work on 'Hola Mexico', this week the children have had some opportunities to listen to Mexican inspired music and to make a range of Mexican inspired food.



Cadbury's World Trip



Article 31 (leisure, play and culture)

Every child has the right to relax, play and take part in a wide range of cultural and artistic activities.





Public Health
England

Advice on the coronavirus for places of education

How serious is the coronavirus?

- It can cause flu-like symptoms, including fever, cough & difficulty breathing
- The infection is not serious for most people, including children
- There is currently no vaccine
- Most people get better with enough rest, water to drink and medicine for pain

How likely are you to catch the virus?

- You can only catch it if you have been close to a person who has the virus
- The chance of being in contact with the virus is currently low in the UK
- If you have travelled to areas where many people are infected, your chance of catching the virus is higher, in China and any affected areas

How can you stop coronaviruses spreading?

If you need to cough or sneeze



Catch it with a tissue



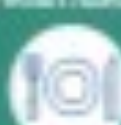
Bin it



Wash it by washing your hands with soap & water or hand sanitizer



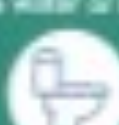
After breaks & sport activities



Before cooking & eating



On arrival at any childcare or educational setting



After using the toilet



Before leaving home



Try not to touch your eyes, nose, and mouth with unwashed hands



Do not share items that come into contact with your mouth such as cups & bottles



If unwell do not share items such as bedding, clothes, pencils & towels



Stop germs spreading with our e-Flag resources on hand and respiratory hygiene below, plans for HSA 1, 2 and 3. campaignresources.phe.gov.uk/handwash

What should you do if you feel unwell?

Keep away from others and stay at home to stop the infection spreading. Avoid public transport if you think you have symptoms of coronavirus. If you become unwell at a place of education, tell a member of staff and let them know if you have travelled to any other countries in the last 14 days.

If your staff member or parent thinks you have symptoms of coronavirus, they should call **NHS 111** for advice. Follow the UK Government advice for children or educational settings gov.uk/government/publications/guidance-to-educational-settings-about-coronavirus. Parents can visit [NHS.UK](https://www.nhs.uk) to find out more information. Teachers and support staff should follow the UK Government advice.

Staff, students and pupils who have returned from Hubei and Hubei Province in China should self-isolate, and NOT attend education or work for 14 days. See [NHS.UK](https://www.nhs.uk) for advice on coronavirus.

If there is an emergency, call 999 immediately





School Dinners



As we approach year end it is vital that all outstanding payments are made in order that we can reconcile our accounts.

Please ensure all payments for dinner monies are paid for in the week in which they are booked and any outstanding debts are cleared immediately. The school office sends texts weekly to ensure you are aware of outstanding payments. Any discrepancies should be reported immediately in order that we can investigate.

(It is school policy that once a dinner money debt exceeds more than one week, we can no longer provide a school meal and ask that you provide your child with a packed lunch until the debt is repaid in full.

After School Club Payments

If you use our after school club please ensure all payments are up to date to secure your place.

Trips

Please ensure all outstanding payments and instalments for trips are up to date .

Thank you for your co-operation.

Happy Child Visit....

<https://happywehappyfamily.com/2017/10/19/what-makes-a-happy-child/>

happy child	unhappy child
kind overall shows more empathy	mean, selfish overall shows less empathy
talks a lot	uncharacteristically quiet
open to new experiences	complains about new experiences
gives hugs & kisses	shy away from hugs & kisses
high tolerance	easily angry or frustrated www.happywehappyfamily.com