



[www.lighthorneheathprimaryschool.co.uk](http://www.lighthorneheathprimaryschool.co.uk)



GOLD - RIGHTS RESPECTING

Dear parents and carers,

The sunshine has returned this week, and it's been great to be able to enjoy some outdoor learning at school. I hope that our remote learners have also been able to enjoy the weather too.

### Returning to school

We have had a good response to our wider re-opening invite. We are looking forward to welcoming back our returners next Monday, although as we stated last week, we fully understand and respect the decisions of those who have chosen for the time being not to return their children.

For children returning to school, there will be three Bubbles of up to 10 children, which will be in the usual classroom spaces, but with socially spaced desks. The Bubble teachers will be; Bubble 1-Mrs Birch/Mrs Hartley, Bubble 2 -Mrs Hill/Mrs Munday, Bubble 3- Mrs Cox. We have tried as much as possible to allocate the children to a Bubble with their existing peers. The Bubbles will operate entirely separately from one another and there will be no whole school meeting points, such as lunch or assembly. The children will eat lunch in their classroom and will play with the children in their Bubble, using the outdoor classroom gardens and the front/back playgrounds on a rota basis.

The school day will be as before, 08.55- 3.00. There are 3 lining up points in the front playground, and spaced markers on which the children should stand, ready to be collected by their Bubble teacher. Your children should wear school uniform please, and not bring in a packed lunch in a box, but in a disposable plastic bag. If your child has a healthy break snack, that should also be sent in as we are not receiving our usual fruit/vegetable supplies. Please make sure that your child can open any lunch food packages and containers independently as we are not allowed to assist. Drinks should be in a named bottle. Coats will be kept on the children's chairs not on coat pegs.

The children will be asked to use hand sanitizer on entry to school and will be required to wash their hands correctly and frequently during the day. They all have their own named hand gel for their work space.



The children will have PE on Friday afternoon, so they can wear their PE kits on that day rather than change.

We have procedures in place for if a child should fall ill or display Coronavirus symptoms whilst at school. We have full PPE equipment, and will test temperature and then isolate the child in our medical room until they are collected.

The Class Teachers will take time on Monday to explain carefully the new procedures and expectations to the children. We will be referring the children to our usual school behaviour Code of Conduct, and our new Social Distancing Success Criteria, a copy of which appears on the next page.

Please take a moment to discuss with your children these new measures we have in school at the moment, and to share in advance of returning, the photos of the new environment that we have included in previous Newsletters.

### Class Structure/Organisation from September

We believe that schools will open fully for all pupils from September and are planning our forward steps on this basis. We will be keeping our existing Class structures the same from September in order to minimise further disruption and change.

### End of Year Reports

We are currently preparing end of year reports and these will be sent out during the last week of term.

We are always mindful of the children's well being and mental health as well as their academic education . As we enter a period of transition and change, it's understandable for the children to be feeling anxiety. This is a good story to share with your child if they are feeling uncertain and worried.

[https://www.youtube.com/watch?v=xNksze5du\\_M](https://www.youtube.com/watch?v=xNksze5du_M)



Have a good weekend,  
Kind regards,  
Jacquie Birch  
Associate Headteacher



Lighthouse Heath Primary School



## Social Distancing Success Criteria



Arrive at school on time and line up in the correct place on the playground—use the signs and floor markings to help you.



Remember to keep two metres apart from other people.



Stay with the children and grown-ups in your "bubble" at all times.



Use your own water bottle and set of equipment—don't share anything.



Follow the one way system when you move around school.



At lunch and break, play in the correct area—don't move into another space or play with children from a different "bubble."



Wash your hands frequently with soap and hot water, especially after using the toilet and before and after eating—remember to do this for 20 seconds.



Try not to touch your mouth, nose and eyes with your hands and always sneeze and cough into a tissue. Afterwards, put the dirty tissue in the bin—“catch it, bin it, kill it.”



When you use the toilet, put the lid down before you flush. Remember to wash your hands and dry them using a paper towel. Come straight back to the classroom!



Tell an adult if you feel unwell, especially if you are hot or have a cough.

# Bubble 1



Today we learnt about the adventurer and naturalist Steve Backshall. We found out about different types of spiders, then we created our own webs by weaving wool through a paper plate. We finished off by making a spider and adding it to the web.

PIC•COLLAGE



# Bubble 1

Tuesday 23rd June



natural



Exploring  
the garden  
like Steve  
Backshall.



OUR  
PLANET

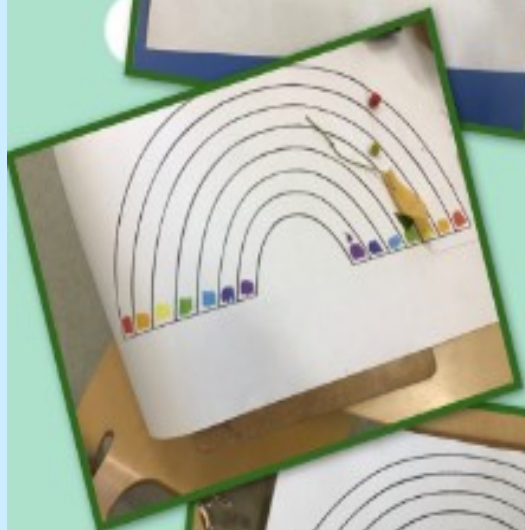


PIC•COLLAGE



# Bubble 1

Wednesday 24th June 2020



Today in forest school we searched the garden for colours from the rainbow. We had to look carefully to find some of the colours. Then we watched a video about camouflage.



PIC•COLLAGE

# Bubble 1



Thursday 25th  
June 2020

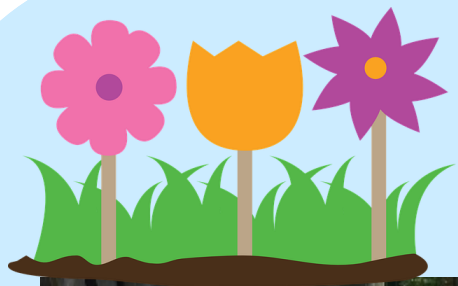


Today we learnt about Australian animals. We found Australia on a globe and a world map. Then we found out about aboriginal art and had a go at making some of our own. We also enjoyed watching some videos about snakes.



PIC•COLLAGE





## Early Years Garden



Mrs Bazeley, Mrs Stafford and Mrs Thorneywork have all worked really hard tidying and improving the outdoor space for our Early Years Garden. They have created this fabulous mud kitchen, which the children have already begun to enjoy.

We hope to be able further to develop this space with planting and gardening activities involving the children throughout the year.

